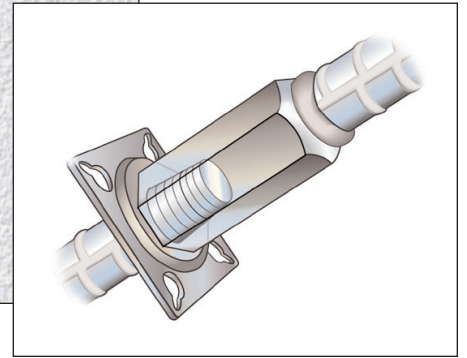
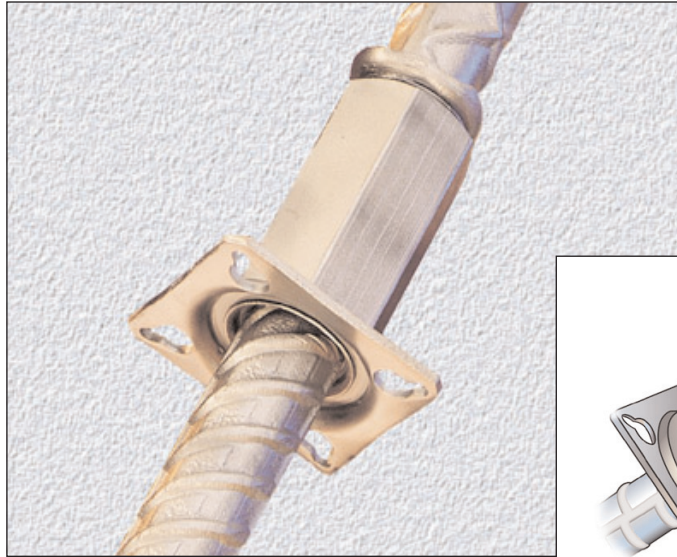


LENTON® FORM SAVER Dowel Bar Substitute

Features

- Eliminates drilling holes in formwork
- Provides for efficiency in slip and jump forming
- Eliminates potential on-site safety hazards due to exposed dowels
- Maintains rebar continuity in segmental concrete construction
- Protects valuable forms by allowing stripping, cleaning and recycling of forms in less time
- Exceeds ACI®, UBC® and IBC® Building Code Requirements and BS, DIN and KIWA splice requirements
- Improves ease of concrete placement
- Available through a network of rebar fabricators and suppliers, assuring prompt delivery



Description

LENTON® FORM SAVER Dowel Bar Replacements are typically specified to provide continuity and structural integrity in segmental pour applications for reinforced concrete construction. The coupler/bar assembly is furnished with an attached mounting plate.* The assembly is, in turn, nailed to the formwork. Once the form is removed, the externally threaded rebar is screwed into the exposed end of the coupler, creating a mechanical butt splice of two sections of reinforcing steel (approximately four revolutions).

Splice Performance

LENTON FORM SAVER splices outperform dowel bars because of their ability to develop strength requirements independent of concrete cover and provide superior performance well beyond the yield strength of the reinforcing bar.

The assembled connection is capable of exceeding the ACI®, UBC®, BS, DIN, KIWA and IBC® (ICC®-ES ER-3967) Building Code requirements for a full-tension mechanical splice. Contact ERICO® for specific Department of Transportation approvals. For a copy of the ICC-ES ER-3967 report, please visit www.erico.com.

*Mounting plate standard in North America only.

Typical Applications

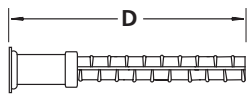
New Reinforced Concrete Construction:

- Segmental Pours – positioned within the form of the first pour to allow fastening prior to the second pour.
- Beam/Column Connection – a bent LENTON FORM SAVER is positioned in the column to structurally join the column.
- Future Extension – embedded within the concrete to structurally join the bar at a future date.

Masonry:

- Reinforced Masonry Applications – replaces lap splices in CMU

LENTON FORM SAVER is available in sizes #4 – #11 (Metric sizes 12 mm through 36 mm) factory standard sizes (lengths) or in custom lengths. Unique bend configurations are also available.



Style F FIG. 1

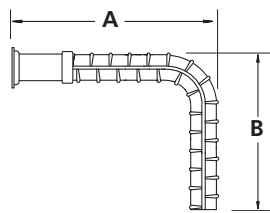


FIG. 2



Style M FIG. 3

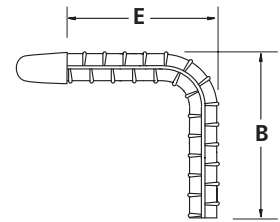
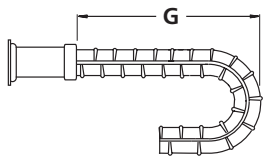
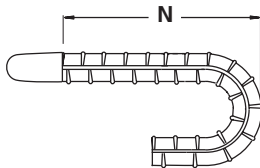


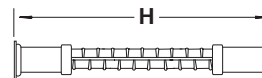
FIG. 4



Style J FIG. 5



Style JM FIG. 6



Style U FIG. 7

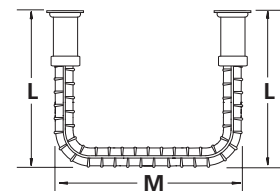


FIG. 8

WARNING
ERICO products shall be installed and used only as indicated in ERICO's product instruction sheets and training materials. Instruction sheets are available at www.erico.com and from your ERICO customer service representative. Improper installation, misuse, misapplication or other failure to completely follow ERICO's instructions and warnings may cause product malfunction, property damage, serious bodily injury and death.

ACI is a registered trademark of the American Concrete Institute. UBC is a registered trademark of the International Conference of Building Officials. IBC is a registered trademark of the International Building Code. ICC Electrical Code is a registered trademark of the International Code Council.

Copyright ©2005 ERICO International Corporation. All rights reserved.

CADDY, CADWELD, CRITEC, ERICO, ERIFLEX, ERITECH, and LENTON are registered trademarks of ERICO International Corporation.