

BAR SUPPORTS

3.14.2 Foundation Mats and Slabs on Ground or on Mud-Mat

Spacing of bar supports for slabs on ground or on mud-mat follows the recommendations in Sections 3.7 through 3.15, adjusted for the particular conditions of weight and rigidity of the reinforcing steel specified.

Bar supports indicated are generally estimated and furnished for slabs up to 4 feet [1200 mm] thick unless otherwise specified on the project drawings or in the project specifications.

Examples of bar supports for foundation mats and slabs on ground:

Plain Concrete Block—Heights to 6 inches [152 mm].

All-Plastic Chair with Base Plate—Heights to 6 inches [152 mm].

HCP—An individual high chair with sand plate for soil bearing. Heights to 15 inches [381 mm].

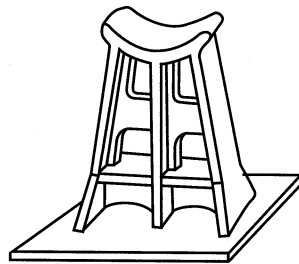
CHCU—Continuous high chair upper. Continuous runner wires provide for support off lower mat of reinforcing bars. Heights up to 15 inches [381 mm].

Standee—A reinforcing bar fabricated to order with the bent legs resting on lower mat of bars.

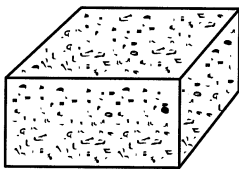
Dowel Block—A precast block with hole for #4 [#13] dowel bar. Suitable for support of both top and bottom mats of bars. Heights to 2 feet [610 mm].

Recommended practice for usage for slabs of total thickness:

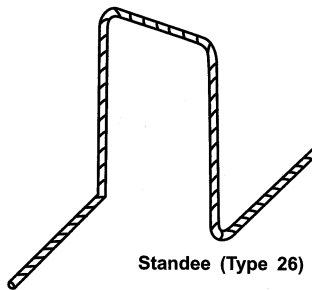
1. 2 feet [600 mm] or less—HCP, Plain Concrete Block, All-Plastic Chair with Base Plate, CHCU, Standees using #4 [#13] bars, or dowel blocks (Western States only).
2. More than 2 feet [600 mm] and up to 4 feet [1200 mm]—Standees using #5 [#16] bars.
3. More than 4 feet [1200 mm]—Bar supports are generally not furnished except by special arrangement.



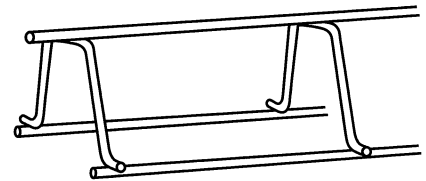
All-Plastic Chair With Base Plate



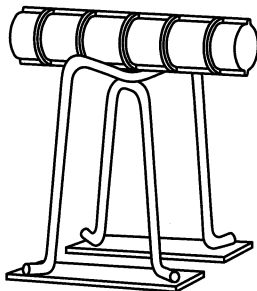
Plain Concrete Block



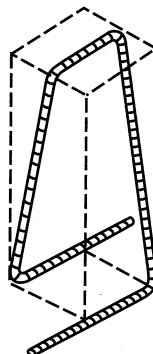
Standee (Type 26)



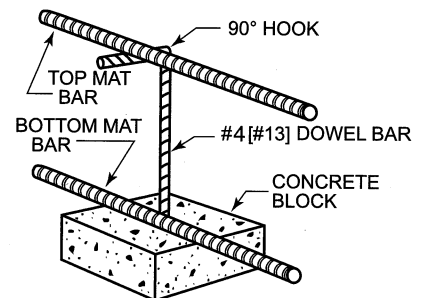
CHCU



HCP



Standee (Type 25)



Dowel Block